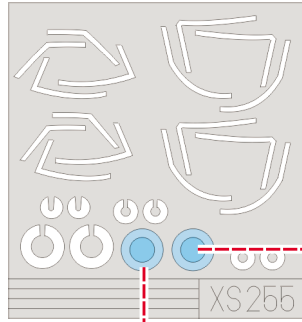
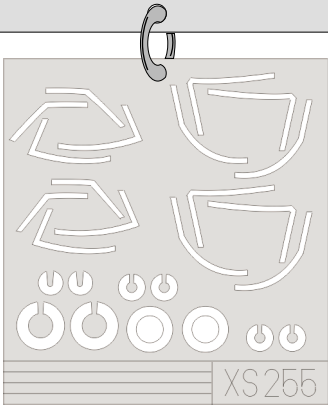


eduard
Express Mask

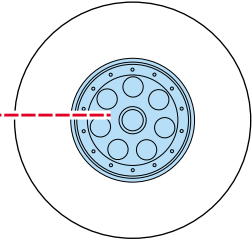
Harrier GR Mk.5

The die-cut mask for accurate canopy frame painting of the
Hasegawa 1/72 KIT

XS 255

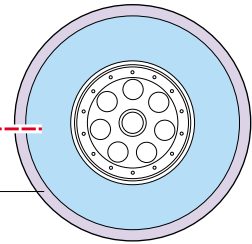


LIQUID MASK



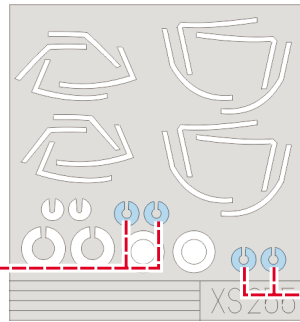
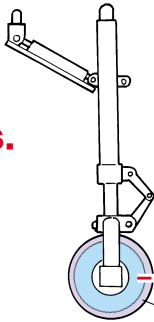
2 pcs.
S10

?

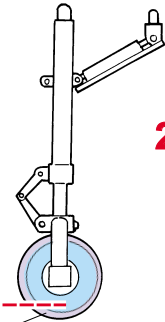


2 pcs.
S10

2 pcs.
T3

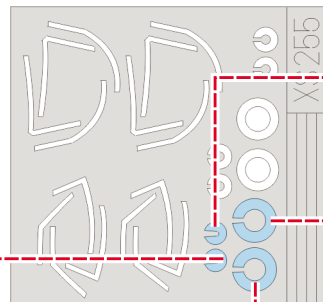
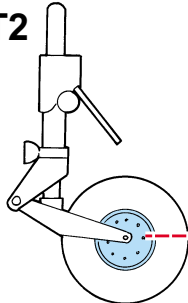


LIQUID MASK

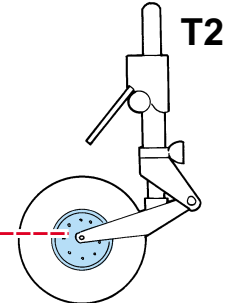


2 pcs.
T3

T2



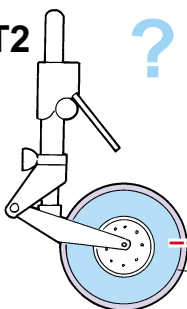
LIQUID MASK



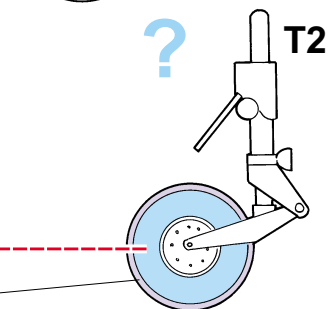
T2

T2

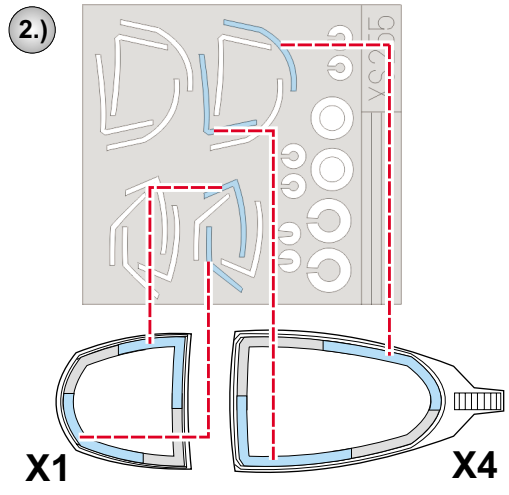
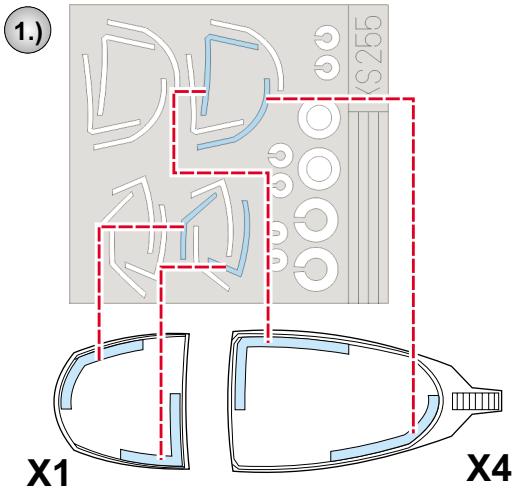
?



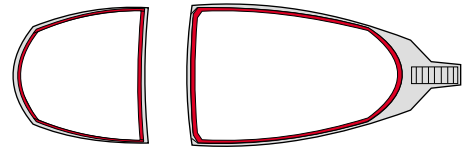
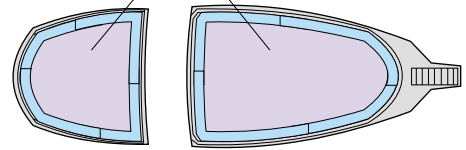
?



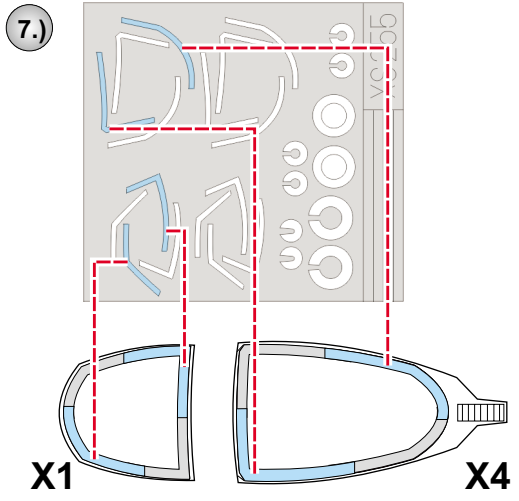
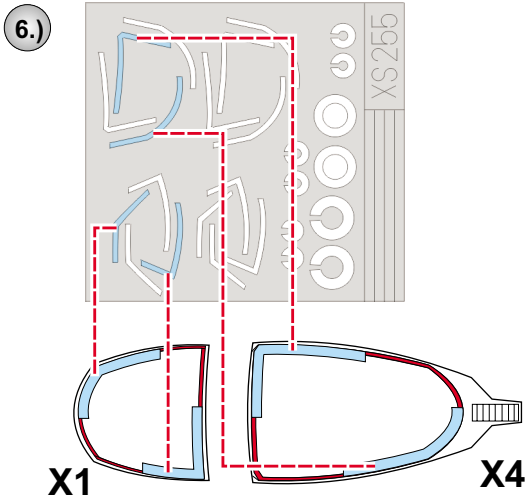
T2



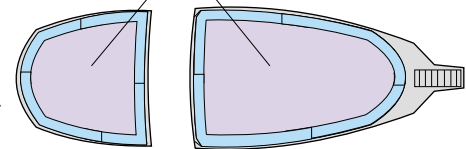
LIQUID MASK



5.) REMOVE MASK



LIQUID MASK



9.) REMOVE MASK

